



# FACA-601-ISE

## Fully Automatic Chemistry Analyzer



Labomed introduces an automatic biochemistry analyzer with varying testing capacities. FACA-601-ISE conducts 760 tests/hr with True Random Access (600 chemistry tests + 160 ISE).

### Features

- Random Access and Direct Reading System.
- Automatic Washing System for Both Sample and Reagent Probe.
- Liquid Level Detection and Collision Protection for Both Sample and Reagent Probe.
- Reliable Cooling System for Reagent Chamber.
- Works with Windows XP and Windows 7
- Powerful Reaction Cuvette Washing System.
- User-Friendly Interface.
- ISE module and barcode scanner (optional)
- Enzyme Kinetic GPT and GOT testing

**Labomed, Inc. is certified by ISO 9001-2013, has CE Conformity and is FDA Licensed**

### Accessories

- 15 Reagent bottle 2 with holder
- 80 Reaction cuvettes
- 1000 Serum cups
- 1 Tube
- 4/4 Fuse (4A/8A)
- 1 Lamp (13.8V/50W)
- 2 Power Cables
- 1 Com Cable
- 1 Piston (1 ml)
- 1 Bottle
- 1 User Manual
- 1 Operation Software CD
- 1 Tool
- 1 Sensor
- 2 Detect Probes
- 1 Sample Probe
- 1 Black Cup
- 1 Sinkage Block
- CABINET IS OPTIONAL



**1 Reagent Tray**

40 reagent positions for FACA-301 and FACA-261  
 80 reagent positions for FACA-401  
 Cooling system may work independently for 24 hours.

**2 Sample Tray**

60 sample positions for FACA-301 and FACA-261  
 88 sample positions for FACA-401

**3 Cuvette**

Either high quality UV-transmitted plastic  
 cuvettes or quartz glass cuvettes available.

**4 Independent Mixer**

1 mixer for FACA-301 and FACA-261  
 2 mixers for FACA-401

**5 Sample probe/ Reagent probe**

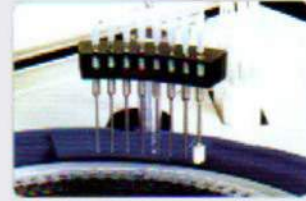
1 sample probe and 1 reagent probe for FACA-301  
 1 sample probe and 2 reagent probes for FACA-401  
 Only 1 sample / reagent probe for FACA-261

**6 ELE Module**

ELE module available on request.

### Cuvette Washing Station

8 channels automatic washing station.



### Independent Mixer

Independent mixer ensuring quick and complete reaction.



### Reaction Cuvette

High quality UV-transmitted plastic cuvettes, or quartz glass cuvette (optional).



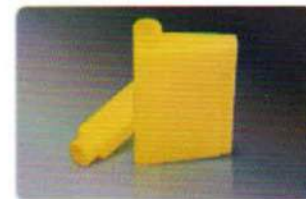
### Sample Probe / Reagent Probe

With liquid level sensor, anti-collision sensor and automatic cleaning function.



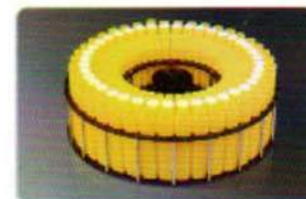
### Reagent Bottle

More convenient and economical ready to use reagent kits.



### Reagent Tray

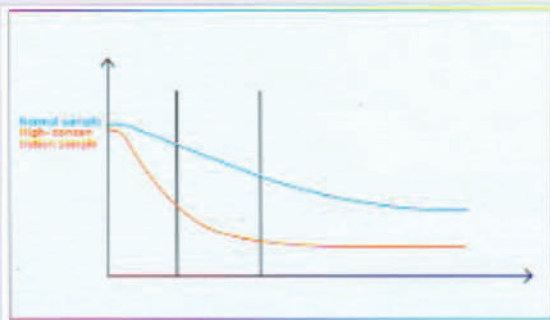
With cooling reagent chamber.



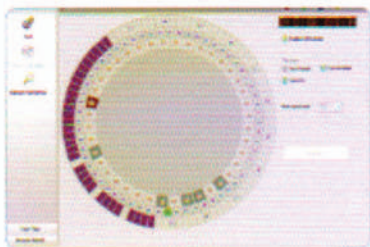
## Software



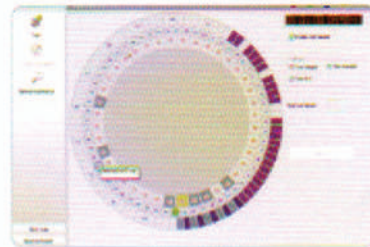
**User-Friendly Interface**  
**Compatible with Windows XP, Vista or Windows 7**



**Variable reading function**

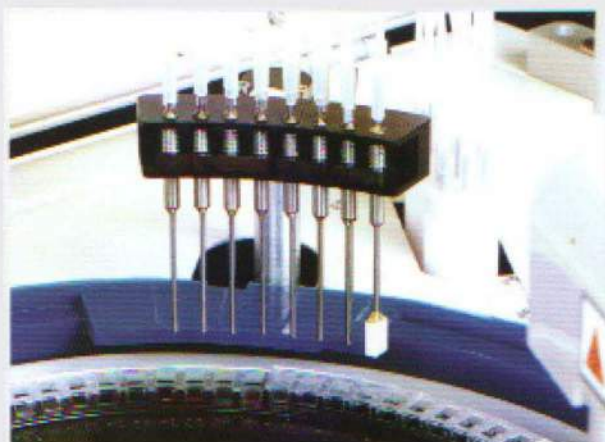


**Carry Over Control Function**



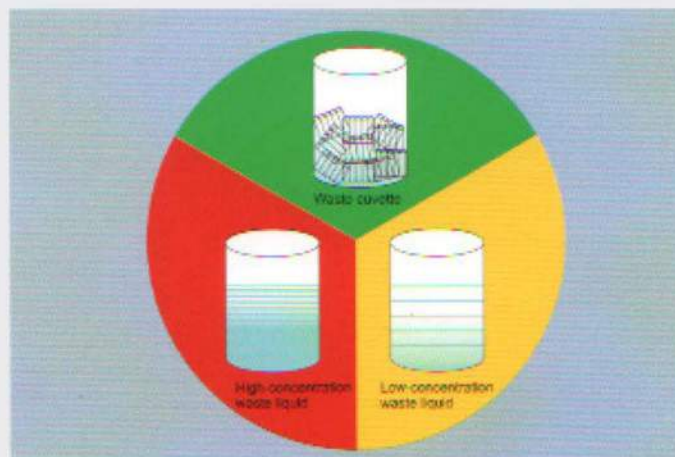
**Automatic Alarm for Malfunctions**

## Automatic Washing Station



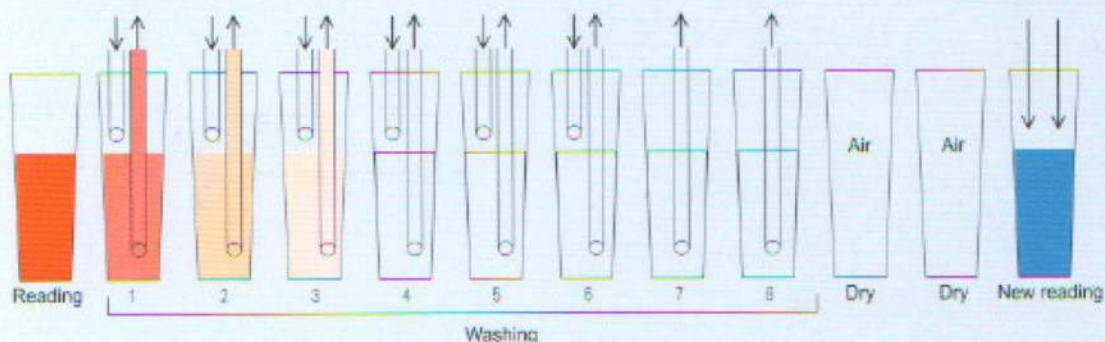
An 8-channel washing station ensures complete washing for cuvettes.

## Environmental Protection Design



The waste is automatically classified and collected into different containers.

## Automatic cuvette washing and blanking makes more precise results



Wavelength	Reading	Wash1	Wash2	Wash3	Wash4	Wash5	Wash6	Wash7	Wash8	Dry	Dry	New reading
340nm	1.3100	0.025	0.0092	0.0037	0.0022	0.0008	0.0006	0.0005	0.0002	0.0800	0.0850	/
405nm	0.6920	0.0112	0.0075	0.0033	0.0019	0.0010	0.0005	0.0003	0.0002	0.0800	0.0805	/
450nm	0.5261	0.0108	0.0066	0.0031	0.0015	0.0009	0.0003	0.0003	0.0002	0.0806	0.0805	/
510nm	0.7005	0.0113	0.0055	0.0027	0.0012	0.0006	0.0002	0.0002	0.0001	0.0810	0.0811	/
546nm	0.5368	0.0184	0.0072	0.0043	0.0013	0.0008	0.0002	0.0002	0.0002	0.0840	0.0843	0.5080
578nm	0.0136	0.0135	0.0064	0.0031	0.0012	0.0006	0.0002	0.0002	0.0002	0.0800	0.0800	/
620nm	0.0189	0.0189	0.0054	0.0026	0.0010	0.0005	0.0002	0.0002	0.0002	0.0800	0.0800	/

Test O.D. value-Real reagent blank=True O.D.value

# FACA-601-ISE Automatic Biochemistry Analyzer

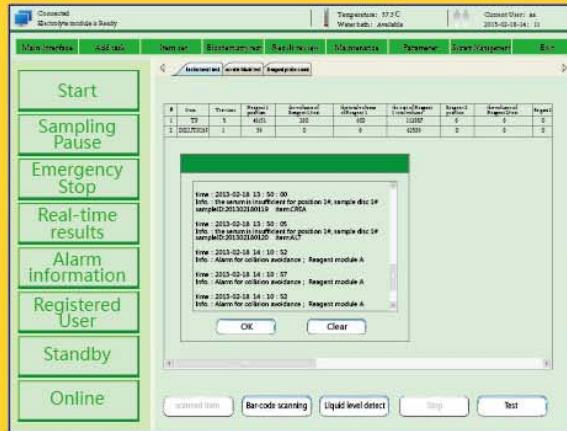
More powerful software meets all needs.



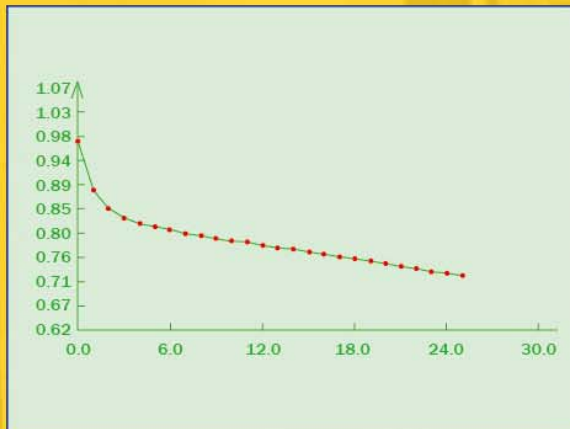
- High throughput random access...
- 760 Tests/hour (including ISE)
- New style software, more friendly, efficient and convenient.
- Water-bath incubation technology ensures accurate reaction temperature.
- Frequency conversion technology makes movement more stable, reliable and lower noise.
- Perfect self-test and position auto-locating function minimize mechanical error.
- Auto stand-by function for saving energy consuming and 24 hours ready for work.
- Perfect Instrument-Reagent-Control/Calibrator system ensures the results with good traceability and coherence.



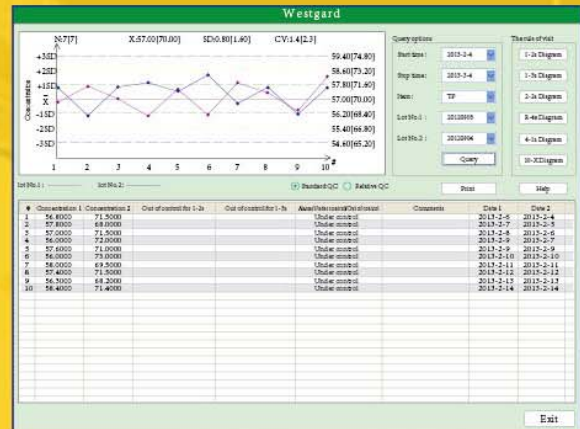
# FACA-601-ISE Automatic Biochemistry Analyzer



- Smart warning and easy to correct function.

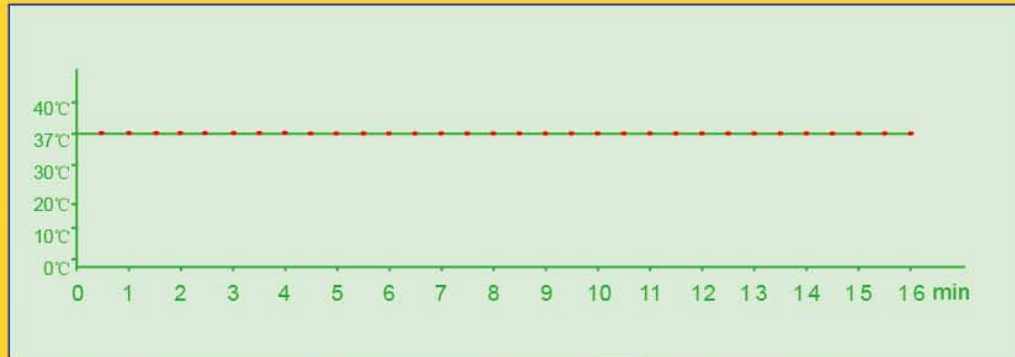


- Reaction curve displaying on line and storing helps results analysis.

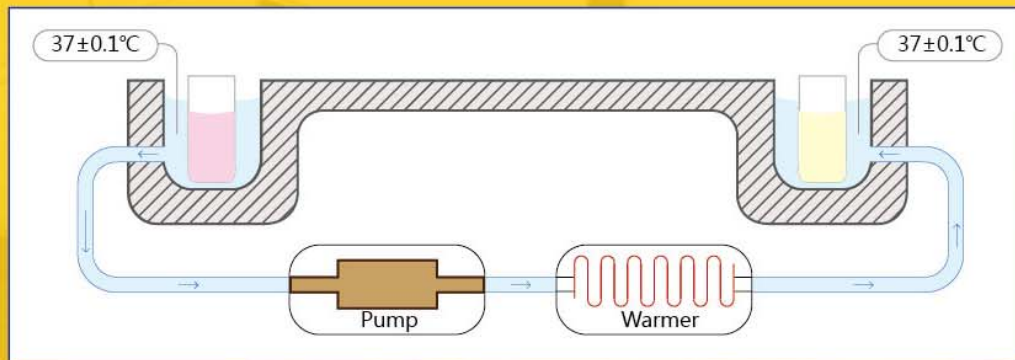


- Levy jennings quality control program at multi-level.

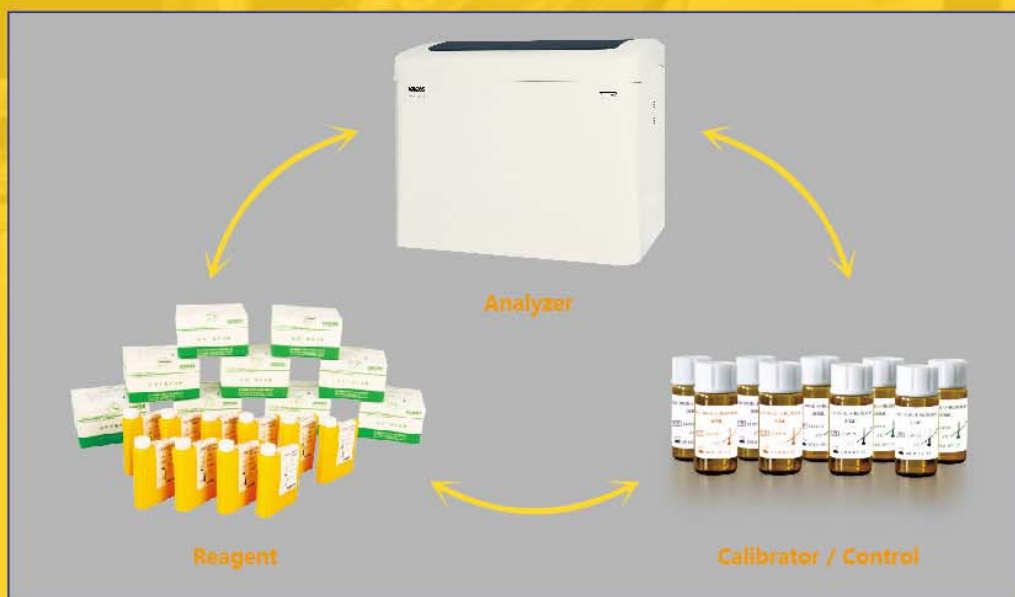




- Automatic high precision water-bath technology to ensure the temp. keeps at  $37\pm 0.1^{\circ}\text{C}$  immediately and constantly.



- Water-bath system.

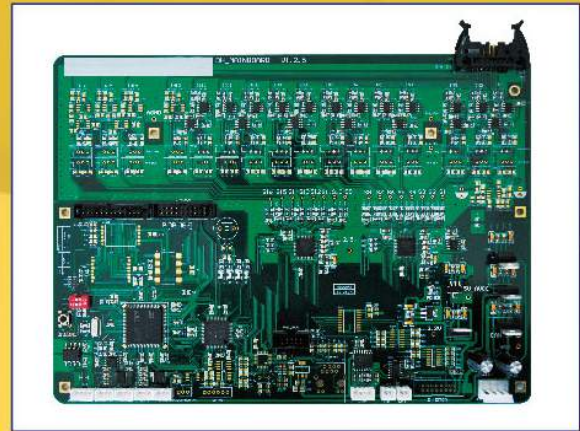


- Complete Instrument-Reagent-Control/Calibrator system guarantees traceability and reliability of all results.

# FACA-601-ISE Automatic Biochemistry Analyzer



- ISE module is optional, test various ion items at the same time with accurate results and stable performance.



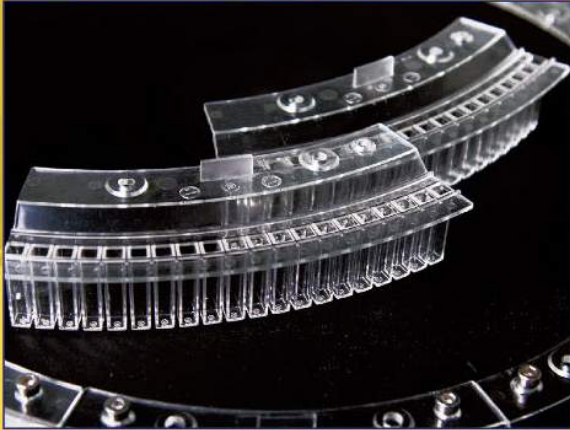
- Advanced high sensitive test technology.



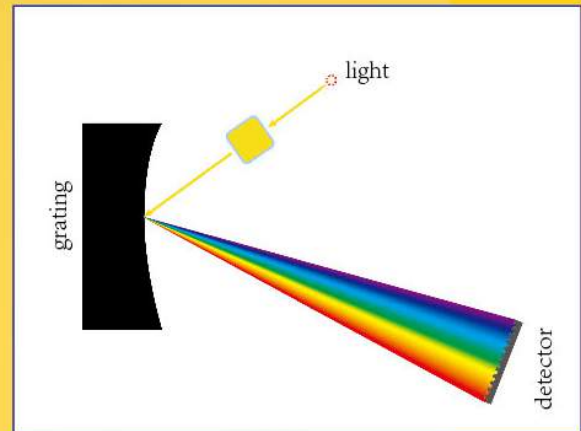
- Eight channels washing station for each cuvette cleaning, automatic record and deduct cuvette blank value. Heavy washing function available for "dirt cuvette" to ensure each cuvette perfectly clean.



- High accuracy diluter, advanced sealed and connecting technology to guarantee accurate sampling.



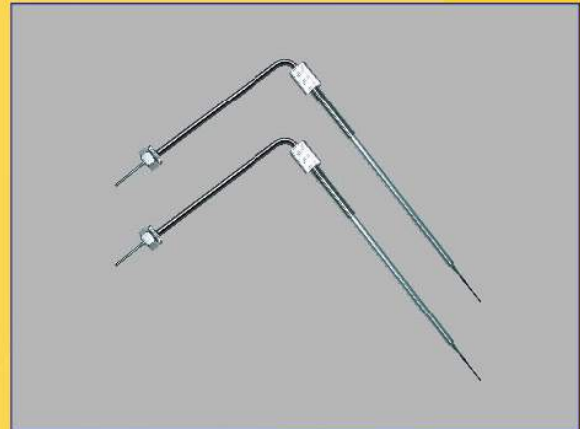
- High quality plastic cuvette (quartz glass cuvette available on request).



- High resolution concave grating system, wavelength range 340-800nm, multi-wavelength polychromatic assay at the same time.



- Two separate reagent chambers with independent refrigerator.



- Internal and external nano treated probe effectively reduce probe residual and carry over.

## Technical Specifications

<b>Model</b>	FACA-601-ISE
<b>Assay types</b>	Random access
<b>Throughput</b>	760 T/hr(include ISE), 600 T/Hr(biochemical test only)
<b>Analytical methods</b>	End point, Kinetic(Rate), Fixed time, Single standard, Multi-standard, Single wavelength assay, Bichromatic, Bi-reagent assay, Serum blank assay, Immunoturbidimetric assay and ISE assay (K\Na\Ca\C\PH)
<b>Sample capacity</b>	2 x 92 primary tube or micro serum cup
<b>Sample/reagent probe</b>	With liquid level sensor, automatically checking and tracking reagent allowance ability, internal and external nano treated, stereoscopic collision protection, plugging probe checking ability
<b>Sample volume</b>	1.0–100ul in 0.1 µl/step
<b>Reagent volume</b>	1–500ul in 0.1 µl/step
<b>Reagent tray</b>	2 reagent trays, barcode scanner available (on request), R3/R4 assay models available
<b>Reagent refrigerator</b>	2–8 °C, 24 hrs available
<b>Reading Cuvette</b>	160 cuvettes,made of ultraviolet transmittable plastic(or quartz glass cuvettes available on request)
<b>Reaction volume</b>	Minimum 120 µl
<b>Reaction disc temp.</b>	Water bath system, 37 ± 0.1°C,(air bath on request)
<b>Cuvette cleaning</b>	Automatical warm water washing station with 8 channels, blank reading for ensuring each cuvette well cleaned before using. Smart detergent clean for high contamination cuvette and probe, efficiently decreasing carry-over
<b>Carry-over</b>	Less than 0.05%
<b>Monochromator</b>	Concave grating
<b>Wavelength range</b>	340–810nm
<b>Alarm</b>	Automatic alarm for lack of reagent, sample , water, or waste filled and other errors, showing the info on monitor
<b>Mixer</b>	2 nano-surface treated mixing probers, with automatic warm water washing station for each one
<b>Quality control</b>	Multi-level QC for the same item automatically monitoring and alarming if the results out of control
<b>Assay Linearity range</b>	Wide linearity range measuring, also with automatically diluting function for high value sample
<b>Calibration</b>	Single or multi-points calibration, supporting linear and nonlinear assay
<b>Data processing</b>	Powerful software for calculating, blanking, multi-analysis, data reviewing, QC and results management,on line monitoring, editing etc.
<b>Data storage</b>	Long-term storage, storage capacity upon PC hard disc
<b>Print</b>	Multi report formats and user-self-defined report format are available
<b>Power supply</b>	AC 110V/60Hz or 220V/50Hz
<b>Dimensions</b>	1200mm x 900mm x 1100mm

Connect With Us

