

## 3B Scientific® Torsos

Torsos with musculature, life-size or smaller, for secondary education or for medical training: if top-quality human torso-models are important to you, then 3B Scientific is exactly the right choice for you! Our torsos are developed in close coordination with anatomy professors and doctors, and are made in Germany by highly specialised model-builders with high-quality, toxicologically harmless materials. Since this practice is unfortunately not the case with all manufacturers, consider your health and that of your students and patients and ensure that you are ordering anatomical models with harmless components by asking for an independent study guaranteeing the same.

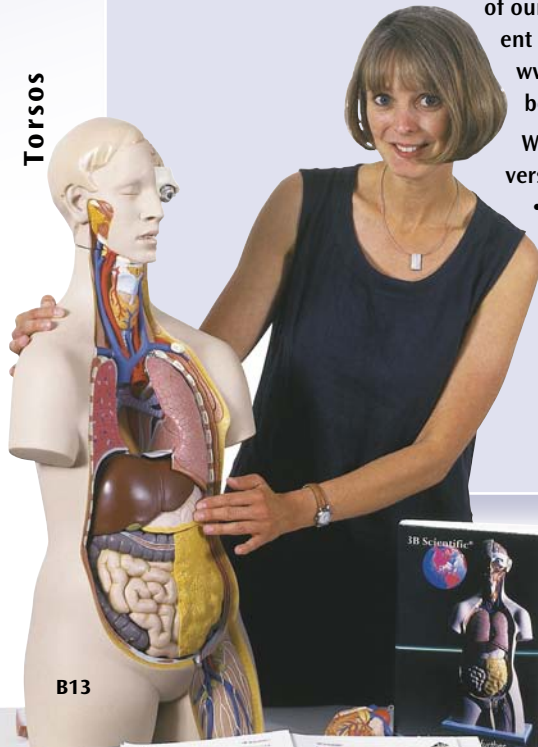
We were the first manufacturer to order a long term study of one of our models (Torso B13) to be examined to verify the safety of our materials. This study was carried out by the TÜV (the nationally recognized independent German inspection organisation). A report of the results can be found on our webpage [www.3bscientific.com/downloads,d.html](http://www.3bscientific.com/downloads,d.html). Because hands-on training tools should not only be vivid and thrilling but also safe!

Whether you choose from the Classic Series, the Luxury Series or one of our special versions, every 3B Torso is:

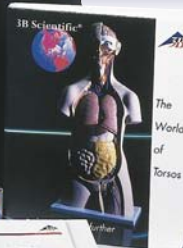
- developed and modelled in Germany
- accurately manufactured from high-quality, harmless materials
- painted by hand true to natural detail

And Classic and Luxury Torsos come with our detailed 3B Scientific® Torso Guide including a CD-ROM.

Torsos



B13

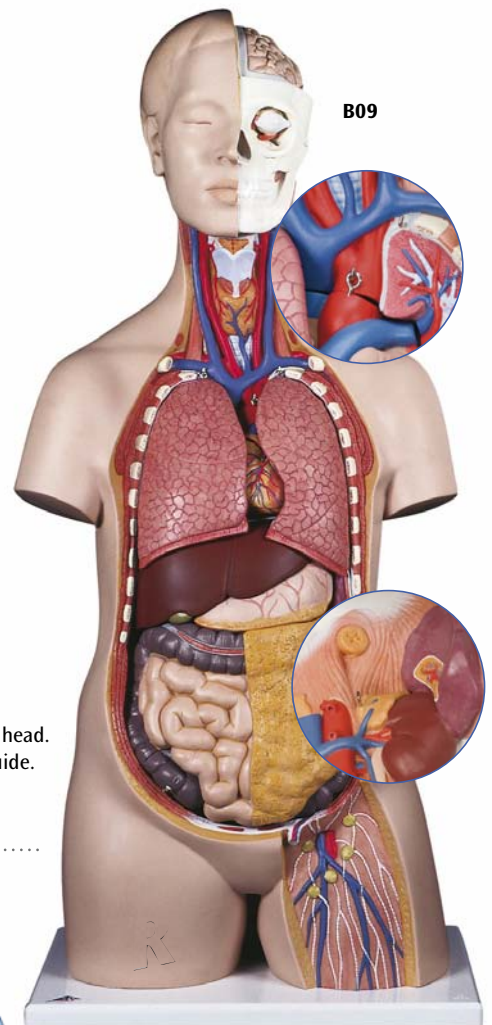


B01



B02 Description see page 47

**BESTSELLER**



B09

### Classic Unisex Torso, 14-part

This popular school torso is supplied with the following removable parts:

- 3-part head
- 2 lungs
- 2-part heart
- Stomach
- Liver with gall bladder
- 2-part intestinal tract
- Front half of kidney
- Front half of urinary bladder

Supplied with 3B Torso Guide.  
87x38x25 cm; 5.9 kg

B13

### Classic Unisex Torso, 11-part (not shown)

Same as B13, but without head.  
Supplied with 3B Torso Guide.  
70x38x25 cm; 5.5 kg

B12

### 3B Torso Guide

- Brilliant coloured pictures of each part of the torsos
- Even the smallest structures are explained
- Valuable teaching tips to create more interesting lessons
- Complete with 7 different languages (Latin, English, German, Spanish, Portuguese, French, Japanese)
- Also on a CD-ROM in pdf format to assist in creating tests or preparing lessons
- Supplied complete in a coloured filing system.

B01

### Classic Unisex Torso, 12-part

The following components of this torso are removable:

- 2-part head
  - 2-part removable heart
  - 2 lungs
  - Stomach
  - Liver with gall bladder
  - 2-part intestinal tract
  - Front half of kidney
- Supplied with 3B Torso Guide.  
87x38x25 cm; 4.6 kg

B09

### Classic Unisex Torso, 10-part

(not shown)  
Same as B09, but without head.  
Supplied with 3B Torso Guide.  
70x38x25 cm; 4.1 kg

B09/1

Anatomy



### Classic Unisex Torso, 16-part

This torso is especially popular among students. It shows the human anatomy in great detail and contains the following removable parts:

- 3-part head
- 2 lungs with sternum and rib attachments
- 2-part heart
- Stomach
- Liver with gall bladder
- 4-part intestinal tract
- Front half of kidney
- Front half of urinary bladder

Supplied with 3B Torso Guide (page 46).

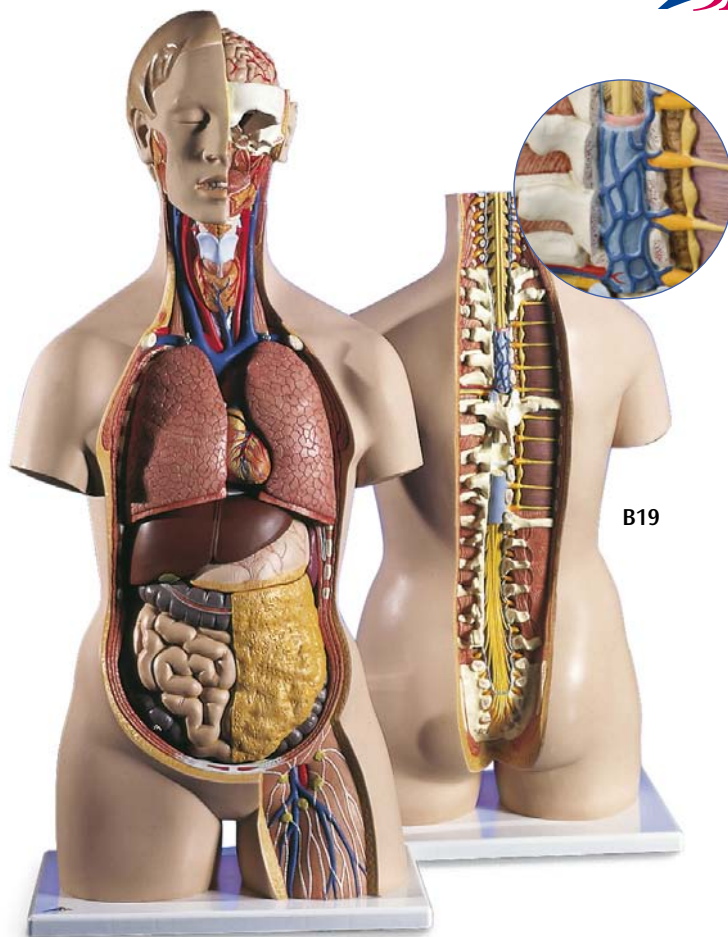
87x38x25 cm; 6.8 kg

**B11**

### 3B Torso Classroom Set

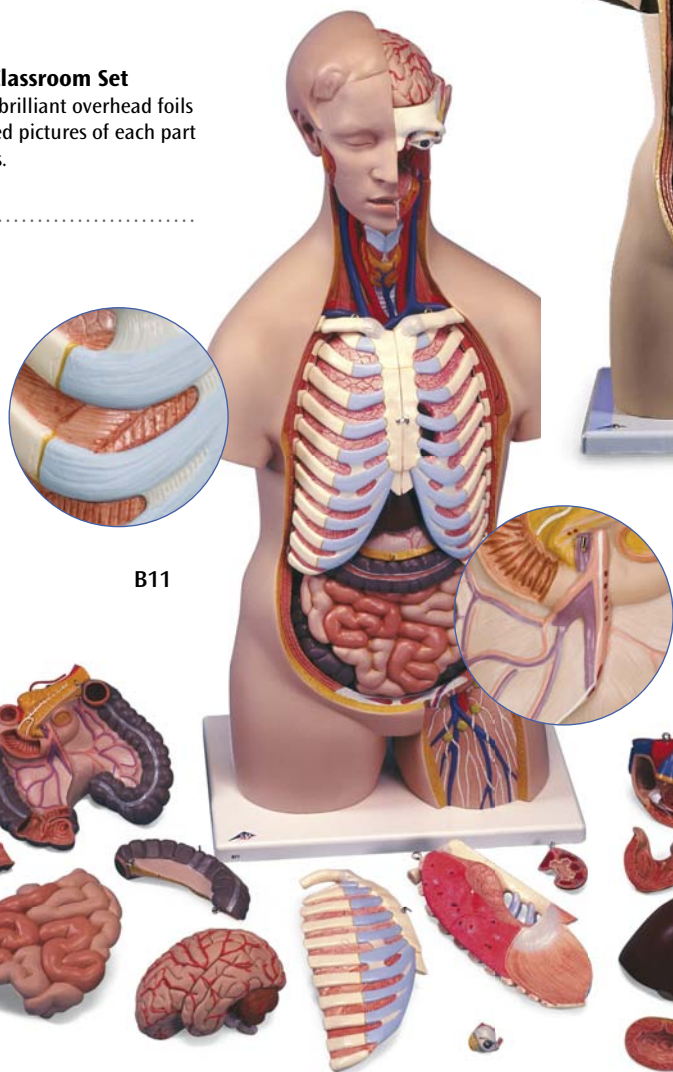
Includes 33 brilliant overhead foils with coloured pictures of each part of the torsos.

**B02**



B19

Torsos



B11

### Classic Unisex Torso with Opened Neck and Back, 18-part

Based on our B13 torso, this model is characterised by its open neck and back section reaching from the cerebellum to the coccyx. Vertebrae, intervertebral discs, spinal cord, spinal nerves, vertebral arteries, and many other features are represented in detail and can be studied closely. It contains the following new features additionally to B13:

- 7th thoracic vertebra removable
- 6-part head

Supplied with 3B Torso Guide (page 46).

87x38x25 cm; 5.8 kg

**B19**

### Overview: Classic-Torsos

Product Number	B09/1	B12	B09	B13	B11	B19	B17	B36	VA30	VA31
<b>Parts</b>	10	11	12	14	16	18	21	14	17	11
<b>Open Back</b>	–	–	–	–	–	yes	yes	–	yes	–
<b>Head</b>	–	–	2-part	3-part	3-part	6-part	6-part	3-part	2-part	1-part
<b>Lungs</b>	yes	yes	yes	yes	yes	yes	yes	yes	yes	yes
<b>Rib Representation</b>	–	–	–	–	yes	–	yes	–	–	–
<b>Heart</b>	2-part	2-part	2-part	2-part	2-part	2-part	2-part	2-part	2-part	2-part
<b>Stomach</b>	1-part	1-part	1-part	1-part	1-part	1-part	2-part	1-part	2-part	2-part
<b>Liver/Gall Bladder</b>	yes	yes	yes	yes	yes	yes	yes	yes	yes	yes
<b>Intestinal Tract</b>	2-part	2-part	2-part	2-part	4-part	2-part	4-part	1-part	1-part	1-part
<b>Half Kidney</b>	yes	yes	yes	yes	yes	yes	yes	yes	yes	yes
<b>Half Urinary Bladder</b>	–	yes	–	yes	yes	yes	yes	yes	yes	yes

Connect With Us

