

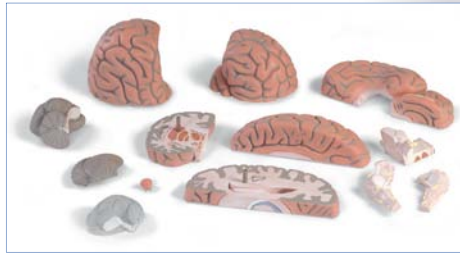
### Giant Brain, 2.5 times full-size, 14-part

A comprehensive brain model that is also a very useful teaching aid, especially for large groups of students. All structures of the brain and the ventricles are visible through median, frontal and horizontal sections. Delivered on removable base.

34x30x37 cm; 5.6 kg

L/D/E/F/S

VH409

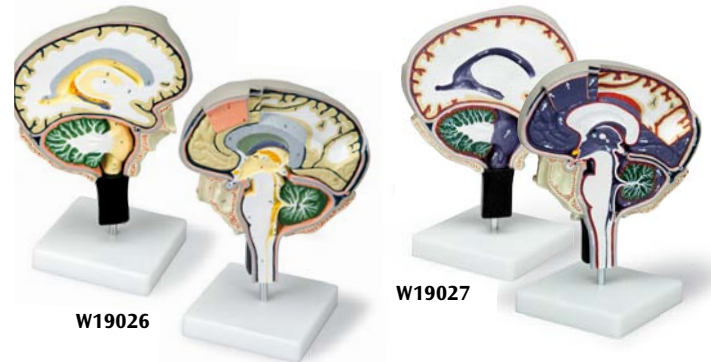


VH409

Brain



W42565



W19026

W19027

### Regional Brain, 4-part

The following lobes and regions of this 2-times life-size brain are represented in different colours and labeled in English:

- Frontal lobe
- Parietal lobe
- Occipital lobe
- Temporal lobe
- Motor cortex
- Somatosensory cortex
- Limbic cortex
- Cerebellum
- Brain stem

The twelve cranial nerves and additional features are numbered. Supplied with wooden stand.

23x20x30 cm; 2.38 kg

E

W42565

### Brain Ventricle

This model shows both side ventricles, the 3rd and 4th ventricle and the Aquaeductus cerebri (Sylvius). On stand.

14x11x14 cm; 0.6 kg

L/D/E/F/S/P/I/J www.

VH410



VH410

### Brain Section

An enlarged and very detailed section through the right half of the brain, including a portion of the skull. The pia mater has been removed. This model is double sided and finely coloured. One surface is on the median line, including a section of the falx cerebri. A sagittal cut on the reverse exposes the lateral ventricle. There are 49 references on the model, identified in English in an accompanying key card. Mounted on a stand.

25x18x12 cm; 0.9 kg

E

W19026

### Cerebrospinal Fluid Circulation

Enlarged, detailed model of a section through the right half of the brain showing the cut pia mater, arachnoid and dura mater. The model has the cerebrospinal fluid areas clearly identified and the direction of flow indicated by arrows. Bright colours to distinguish important features; identified in English in an accompanying key card. Mounted on stand.

25x18x12 cm; 0.9 kg

E

W19027

### Rat Brain Comparative Anatomy

The C29 model shows a rat brain in approx. 6-fold enlargement. Sectioned medially, it can be disassembled into two halves. The right half of the model shows the structures of the cerebrum, cerebellum and brain stem, each of which is colour-coded for didactic purposes (cerebrum = pink, cerebellum = blue, brain stem = yellow), both externally and in the median section. The left half of the model is largely transparent, thus revealing a view of the coloured left lateral ventricle and hippocampus, which can also be seen in the median section. For purposes of comparison, a natural cast of a rat brain and a didactic, small-scale illustration of a human brain in median section are shown on the base, with the same colour coding used for the various regions.

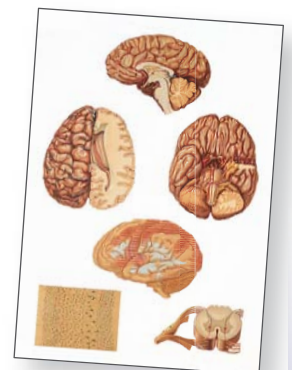
14x10x16 cm; 0.24 kg

L/D/E/F/S/P/I/J www.

C29



C29



V2034

Anatomy

C29