

# BS-200

## Chemistry Analyzer



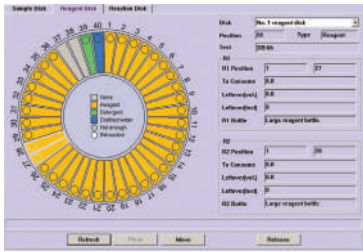
**mindray**  
healthcare within reach

# BS-200

## Chemistry Analyzer

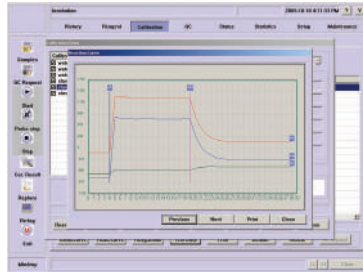
- Discrete, random access, fully automated
- 200 tests per hour, up to 330 tests per hour with ISE
- Optional for ISE module and internal bar code reader
- 40 positions for samples and reagents respectively
- Automatic probe cleaning, liquid level detection, collision protection
- Reversed optic system with 8 wavelengths: 340~670nm
- Refrigerated reagent and sample compartment
- Bi-directional LIS interface





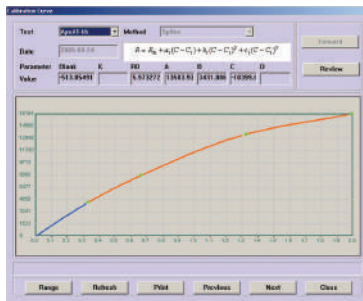
### Dynamic and Real-time display of running status

- Running status of reagent tray, sample tray and reaction tray
- Real-time monitoring of reagent residual volume
- Probe depth adjusted automatically



### Original reaction data record

- Real-time monitoring of reaction curve
- Bichromatic testing to avoid interference
- Simultaneously display primary and secondary wavelengths
- Detailed profile of alert messages
- Real-time diagnosis of system working status



### Optimum calibration curve

Calibration classification:

- Linear curve type: One-point linear, Two-point linear and Multi-point linear.
- Nonlinear curve type: Logistic-Log 4P、Logistic-Log5P、Exponential 5P、Polynomial 5P and Spline.



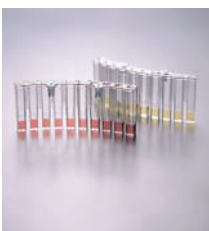
### High quality ISE Module (optional)

- Measuring K+, Na+, Cl-
- Throughput: up to 225 or 300 tests per hour
- 6 months shelf life



### Multi-functional sample/reagent tray

- Optional internal reagent/sample bar code reader
- 40 positions for samples and reagents respectively
- Primary tubes and various sample cups can be used, non-fixed positions for samples, control, calibrators and STAT
- 24 hour non-stop cooling with Peltier elements



### Disposable reaction cuvettes

- Disposable cuvettes to avoid carry-over and to save operating costs
- Automatic cuvettes blank checking to assure precise results



### High performance mixer design

- Avoid cross contamination
- Optimal homogenization in minimum time
- Function immediately (within the same period)

# BS-200

## Chemistry Analyzer

### Technical Specifications

#### System Function:

Automatic, Discrete, Random Access  
STAT sample priority

Throughput: Up to 200 tests/hour (without ISE), up to  
330 tests/hour with ISE

Measuring principles:  
Absorbance photometry, Turbidimetry,  
Ion Selective Electrode technology

Methodology: End-point, Fixed-time, Kinetic, optional  
ISE  
Single/Dual reagent chemistries,  
monochromatic/bichromatic  
Linear/non-linear multi-point calibration

Programming: Open system with user defined profiles  
and calculation chemistries

#### Reagent/Sample Handling:

Reagent/Sample tray:  
40 positions for reagents and 40  
positions for samples in refrigerated  
compartment (4~15°C)

Reagent volume:  
R1: 180~450µl, step by 1 µl  
R2: 30~450µl, step by 1 µl

Sample volume: 3~45µl, step by 0.5 µl

Reagent/Sample probe:  
Liquid level detection, collision protection and  
inventory checking

Probe cleaning: Automatic washing for both interior and exterior  
Carry-over < 0.1%

Automatic sample dilution:  
Pre-dilution and post-dilution  
Dilution ratio up to 1: 150

Dilution vessel: Disposable cuvette

#### Internal Bar Code Reader (optional):

Used for sample and reagent programming  
Applicable to various bar code systems of  
Codabar, ITF (Interleaved  
Two of Five), code128, code39,  
UPC/EAN, Code93  
Capable to communicate with LIS in  
bi-directional mode

#### ISE Module (optional):

Measuring K<sup>+</sup>, Na<sup>+</sup>, Cl<sup>-</sup>, Li<sup>+</sup>

Throughput: Up to 225 tests per hour

#### Reaction System:

Reaction rotor: Rotating tray, containing 80 cuvettes

Cuvette: Optical length 5mm

Reaction volume: 180~500µl

Reaction temperature: 37°C

Temperature fluctuation: ±0.1°C

Mixing System: Independent mixing bar

#### Optical System:

Light Source: Halogen-tungsten lamp

Photometer: Reversed optics, static fiber spot photometry

Wavelength: 340nm、405nm、450nm、510nm、546nm、  
578nm、630nm、670nm

Absorption range: 0~4.0Abs (10mm conversion)

Resolution: 0.0001Abs

#### Control and Calibration:

Calibration mode: Linear (one-point, two-point and multi-point),  
Logit-Log 4P, Logit-Log 5P, Spline,  
Exponential, Polynomial, Parabola

Control software: Westgard multi-rule, Cumulative sum  
check, Twin plot

#### Operation Unit:

Operation system: Windows® XP Professional/Home SP2 or above  
Windows® VISTA Home/Business

Interface: RS-232

#### Working Conditions:

Power Supply: AC 200~240V, 50/60Hz, 1000W or  
AC 100~130V, 50/60Hz, 1000W

Temperature: 15-30°C

Humidity: 35-80%

Water consumption: 3.5L/hour

Dimension: Bench top: 34 inch (W) x28 inch (D)x25 inch (H)

Floor standing: 860mm (W) x700mm (D) x1160mm (H)

Weight: Bench top: 116 Kg

Cabinet (optional): 51 Kg



Connect With Us

