

ChemWell[®]-T

Superstar



*A fully automated,
random access analyzer
for Biochemistry and
Immuno-Turbidimetric Assays.
Designed specifically to meet the needs
of lower throughput labs.*

*Durable - Accurate - Precise - Economical
Cost Effective By Design[®]*



سوماتكو
SOMATCO
www.somatco.com



ChemWell®-T **A STAR IS BORN**

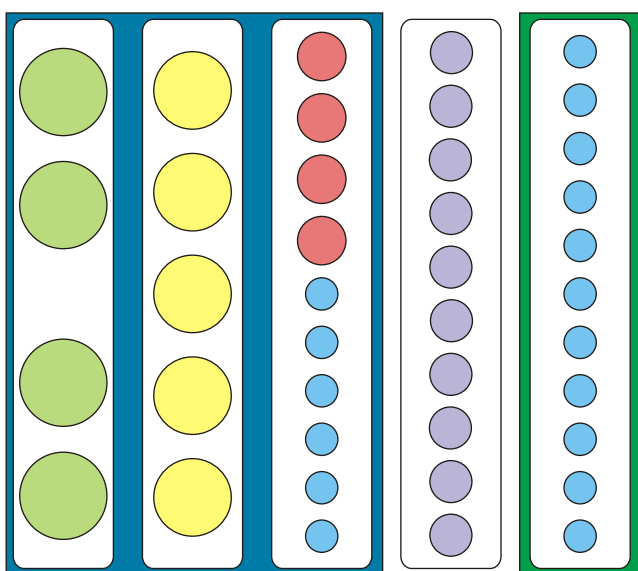
Unprecedented Flexibility

ChemWell®-T is designed and manufactured by Awareness Technology, an American company that has specialized in supplying laboratory instruments to lower throughput labs since 1982. ChemWell®-T is not a “junior” or “mini” version of a high throughput analyzer. Instead, it is a PC-controlled random access open system optimized in quality, speed, dependability, and economy designed specifically for the small lab environment.

One rack holds everything - reagents, calibrators, controls, and samples.



Place reagents and samples into removable interchangeable rack sectors...



Left side of rack:
3 positions cooled

Right sector
allows for
extended height

...then, select up to 5 from an assortment of removable, interchangeable rack sectors to customize the reagent/sample platform for your workload.

Use primary tubes, pediatric samples, serum vials, and the calibrators, controls and reagents from your own containers.

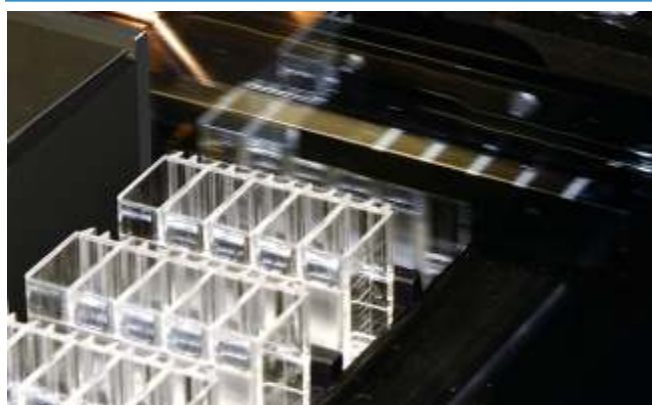
Add more samples, STAT samples or additional reagents as needed.

- ★ **No** carousels.
- ★ **No** custom reagent containers to fill.
- ★ **No** need to transfer specimens to special sample cups.
- ★ **No** reserved rack positions or sections for: reagents, calibrators, controls, samples, or stat specimens.

ChemWell[®]-T *is the Superstar*

Typical reaction volumes 250 μ L

- ✦ Cuvettes are easy to load and unload.
- ✦ Reusable after washing.
- ✦ Starter quantity supplied.
- ✦ Additional cuvettes are commercially available.



Typical speed 100 tests per hour

- ✦ Cuvettes automatically glide through the optical system for endpoint and kinetic reading.
- ✦ 8 strips of 5 cuvettes each allows 40 reactions without intervention.

Multi-function Probe

- ✦ Delivers 5mL to 450mL with typical precision of 2% CV or better.
- ✦ Oscillates to mix.
- ✦ Detects liquid surface.
- ✦ Measures remaining volume.
- ✦ Retracts safely if probe contacts an obstacle.
- ✦ Washes automatically.

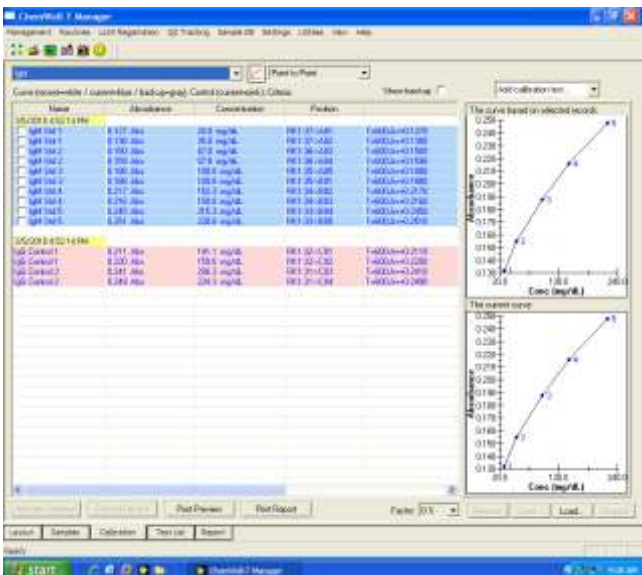
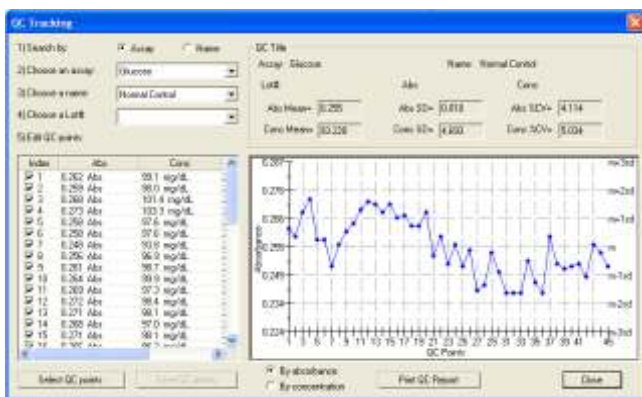
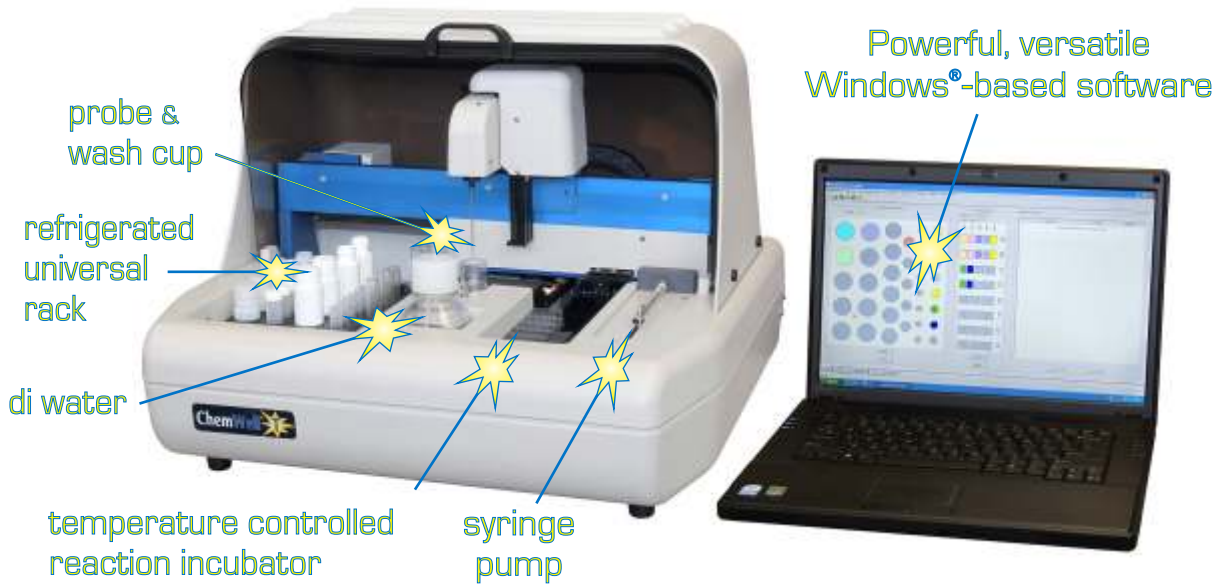


Powerful, versatile Windows[®]-based software

- ✦ Guides user step-by-step with colorful graphics and prompts.
- ✦ Calculates and edits curves for a wide variety of endpoint and kinetic assays.
- ✦ Full QC package provides tracking options for calibrators and controls.
- ✦ Automatic system checks and error messages.

ChemWell[®]-T *is the Superstar*

Chem Well[®]-T embodies quality from start to finish



- ★ Self-check feature at start-up.
- ★ Clean cuvette check option.
- ★ Pop-up instructions assure correct setup.
- ★ Constant internal monitoring.
- ★ Calibrator and control tracking with a complete Levey-Jennings package.
- ★ Re-calibrate daily or at user-selected interval.
- ★ Verify one or more controls at any time.
- ★ Print standard curves.
- ★ Display new and previous curves.
- ★ Edit multi-point curves.

ChemWell[®] Standard Features

- ★ PC-controlled - providing unlimited storage of assay programs, patient data, standards, controls, and QC data. Software and USB cable for computer connection are included.
- ★ PASSWORD security system.
- ★ Built-in performance monitoring of pipetting system, rack and cuvette movers, and optical system.
- ★ Field-searchable patient data base with 2 keyword fields.
- ★ Ability to perform Biochemistry and Turbidimetric Assays
- ★ 6 wavelengths included, with option to add 2 more.
- ★ Built-in reagent cooling system and temperature controlled reactions.
- ★ Process up to 100 assays per hour with continuous loading, automatic, random access, discrete, and stat operation. Automatic dilute and retest for out-of-range samples.
- ★ Flexible universal rack configurations, maximum of 5 positions, 5 segments provided with purchase.
- ★ Ability to program routine jobs, quality control, profiles, and index calculations to suit your laboratory.
- ★ Ability to store and modify calibration curves.
- ★ Custom report formatting, including laboratory name and logo, report by patient, by assay, or design history reports.
- ★ One year manufacturer's warranty and lifetime guarantee on optical filters

Cost Effective By Design[®]

ChemWell-T Technical Specifications

Typical throughput	General Up to 100 tests per hour
Minimum reaction volume	200µL.
Reaction vessel	5-segment express 550 cuvettes,
Maximum volume	500 µL
Dimensions	21" (53cm) width, 15 ½ "(40cm) height, 20" (50cm) depth.
Weight	33 lbs (15 Kg).
Functions	Reagent and Sample Handling Dilution, pre-dilution, dispensing single or multiple reagents.
Syringe Pump	Capacity 500µL, range 2µL-500µL, resolution 0.5µL.
Probe	316 stainless steel for maximum reagent compatibility, level sensing.
Mixing	Probe oscillation, time and speed adjustable.
Precision for volumes <5µL	<3% CV.
Precision for volumes >5µL	<2% CV.
Max. number of reactions	40.
Max. number of reagents/samples	Combined 37 in standard rack. Assorted replaceable racks. Total can be increased with custom design.
Instrument bottles	250mL priming bottle, 2 L drain bottle.
Thermal control	Incubating, timing, and temperature control Ambient or 37°C (other options also available). Incubation timing is software controlled and automatically optimized.
Reagent cooling	Reagent Cooling is standard; cools 9° to 12°C below ambient through Peltier thermoelectric module.
Optical design	Reading User-selected monochromatic or bichromatic results. 8 position filter wheel: 340, 405, 505, 545, 580, 630, + two optional.
Interference filters	Long life, hard coat, ion assisted deposition, 10nm typical half bandpass.
Linear Range	-0.2 to 3.0A.
Photometer Accuracy	± (1% of the reading +0.005A from 0 to 1.5A), ± (2% of the reading +0.005A from 1.5 to 3.0A)
Format	Software USB with internet upgrades
Supports	2000, NT 4.0, XP, Vista, or 7 (Computer not supplied).
Minimum system	128 MB RAM, min. 100MB free drive space, serial or USB port.
Recommended system	Windows® XP, Vista, or 7. Min. 512MB SDRAM, CD drive, USB port.
Calculation modes	Absorbance, single standard, factor, fixed time kinetics, kinetics by standard or factor, multi-calibrator point-to-point, linear regressions, cubic spline, and percent absorbance.
Self monitoring modes	Lamp, filters, reagent levels, mechanical function, and more.
QC options	Store control data, print Levey-Jennings or QC range plots.
	Certifications Pending: NRTL Listing, CE Mark. Awareness Technology is certified under ISO 13485:2003.