

New Brunswick Premium Freezers

Quality. Reliability. Value.

Over 30 years of innovation have gone into the design of New Brunswick Premium Freezers—the original benchmark for top quality ultra-low temperature freezers.

Premium Freezers are known for their worry-free, long-term reliability, sample preservation, and energy efficiency. They provide many of the same features as our Innova models, but are conventionally-insulated for a cost-effective alternative. Polyurethane insulation combined with a highly efficient cooling system achieve and maintain ultra-low temperatures of -86°C .

Premium Freezer models provide significant energy savings—up to 40% less energy consumption compared to other manufacturers' models.

- > Five interior compartments with insulated inner doors for superior sample protection
- > Polyurethane insulation for high performance and efficiency
- > Five models available ranging from 12-25 ft³



Premium Upright Model U410

14.5 ft³

410 L

Holds up to 24,000 samples

External dimensions (H x W x D):

75.3 x 31.5 x 33.5 in

U9260-0000 (120 V)

U9260-0002 (208 V)



Premium Upright Model U570

20.0 ft³

570 L

Holds up to 40,000 samples

External dimensions (H x W x D):

75.8 x 40.3 x 33.5 in

U9270-0000 (120 V)

U9270-0002 (208 V)



Premium Upright Model U700

25.0 ft³

700 L

Holds up to 48,000 samples

External dimensions (H x W x D):

77.1 x 44.1 x 34.2 in

U9280-0000 (120 V)

U9280-0002 (208 V)



Premium Freezers offer the advantage of five interior compartments to limit cold air loss during sample access



Premium Chest Model C340*

12.0 ft³

340 L

Holds up to 26,000 samples

External dimensions (H x W x D):

42.3 x 52.7 x 33 in

U9230-0000 (120 V)



Premium Chest Model C660*

23.3 ft³

660 L

Holds up to 52,000 samples

External dimensions (H x W x D):

42.3 x 80.7 x 33 in

U9250-0002 (208 V)

* Sub lids for chest models include two injection-molded, insulated lids on C340 and three on C660.

To allow for handles and hinges, add 3.1 inches to width of upright freezers and 4.3 inches to depth of chest freezers. Open doors on upright freezers add up to 6 inches.

See pages 18–19 for ordering information, detailed technical specifications and performance data.

A wide range of accessories

CO₂ and LN₂ back-up systems

Loss of power is no problem with Eppendorf back-up systems, which are designed to maintain the contents of your freezer at a preset temperature should a power outage arise.

- > CO₂ or LN₂ is pulsed or continuously released into the chamber to ensure uniform and effective cooling while avoiding excessive consumption. CO₂ can maintain temperatures between -50°C and -70°C, where LN₂ can go down to -85°C
- > Equipped with battery back-up to temporarily protect freezer contents during a power failure

Chart recorder

- > Continuously monitor and record freezer temperature for up to 31 days
- > Covers a temperature range of -100°C to 100°C, with ±2% accuracy

Voltage stabilizers

- > Modulate incoming line voltage and are available for freezer models that do not include an internal stabilizer

Padlock adapter kit

- > Allows a user-supplied padlock to be added to the freezer's outer door handle for extra security



CO₂ back-ups, LN₂ back-ups, and chart recorders can be factory installed **free of charge** when ordered at time of purchase. CO₂ and LN₂ are not interchangeable systems. Gas tank is not included with back-up systems.

Ordering information

Description	Catalog No.
Back-up systems	
Innova CO ₂ back-up, 120 – 220 V, 60 Hz	U9043-0002
Premium/HEF CO ₂ back-up, 120 – 220 V, 60 Hz	U9043-0006
Innova LN ₂ back-up, 120 – 220 V, 60 Hz	U9044-0002
Premium/HEF LN ₂ back-up, 120 – 220 V, 60 Hz	U9044-0006
Chart recorder	P0625-2100
Voltage stabilizers	
Internal slide-in voltage stabilizer for 60 Hz Innova U360	P0625-1090
External voltage stabilizer 120 V, 60 Hz	M1322-0000
External voltage stabilizer 220 V, 60 Hz	M1322-0002
Other accessories	
U101 stacking kit	P0625-0020
Padlock adapter kit for upright models	P0625-1170



Advanced security for peace-of-mind

TCA-3 independent temperature monitoring system

Eppendorf's TCA-3 is an independent temperature monitoring system for those who require complete and reliable sample protection 24 hours a day, 7 days a week. The device provides the features of an alarm, a chart recorder and an autodialer all incorporated into one small pod that integrates seamlessly to any freezer.

Customize your device to send notifications by e-mail, phone, or text message in the event of an alarm. The TCA-3 transmits data to a highly secure data server where redundant systems store a lifetime of data-points. The intuitive graphing and tracking functions provide a complete record of freezer performance. Monitor your freezer in real-time from any web enabled device, anywhere in the world. No need for additional software or a dedicated computer!

- > Small and versatile monitor works with any freezer
- > Customizable alarm notifications by phone, e-mail and text are sent to multiple users until an acknowledgement is received
- > Non-alterable data meets regulatory requirements
- > Alarm acknowledgements and resolutions are tracked for regulatory control
- > Continuous, real-time monitoring records infinite data points for the lifetime of your monitor
- > Easy, Microsoft Excel® compatible report generation
- > Can link multiple monitors to one user login
- > Chamber and ambient temperature probes included and calibrated for immediate use
- > Power-over-Ethernet (PoE) capable
- > Secure, encrypted data transmission
- > Firewall compatible
- > No monthly service fees



Compact communication pod

Easily mounts to the side of your freezer. Includes chamber and ambient temperature probe.

Technical specifications

Dimensions	4.9 x 2.6 x 1.2 in
Weight	227 g (8 oz.)
Sampling rate	User-selected, 30 sec. to 24 hr.
Emergency data storage	256 data points
Operating environment	-40°C to 70°C, 5 to 95% rh

Ordering information

Description	Electrical service	Catalog No.
Pod and probe with wall plug power connection	120 V, 60 Hz	P0625-1630

Performance specifications

In-chamber temperature sensor

Temperature range	-200°C to +200°C
Typical accuracy	±1°C
Measurement resolution	0.1°C
Sensor type	1 x RTD

Ambient temperature sensor

Temperature range	-40°C to +70°C
Typical accuracy at 25°C	±1.4°C
Typical accuracy over full range	±2.1%
Measurement resolution	0.21°C

Maximize storage space

Eppendorf Inventory Racking

Eppendorf provides a durable, lightweight racking system that will perfectly complement your New Brunswick freezer to optimally store and organize your samples.

- > Draw-style racks available for both upright and chest configurations
- > Made of durable, non-corrosive anodized aluminum for long-term use
- > Available for 2-inch, 3-inch, and 4-inch boxes
- > Maximize every inch of storage space

Cardboard Freezer Boxes and Dividers

- > Wax-coated, water-resistant cardboard boxes keep your samples safe and organized
- > Available for 2-inch, 3-inch, and 4-inch tall vials
- > Dividers are available in several different configurations to accommodate from 11.8 to 17.4 tube diameter
- > 7 x 7 to 10 x 10 compartments available

Polypropylene Storage Box

- > For 25 x 5 mL conical tubes
- > Lid with alphanumeric labeling for easy tube identification
- > Comes with 2 boxes: 1 red and 1 blue



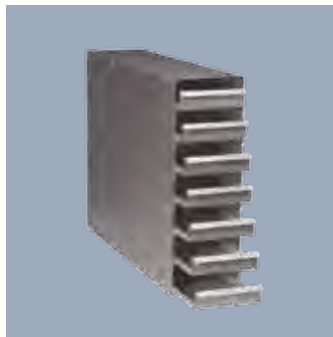
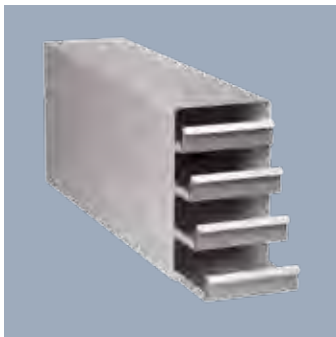
Racks for upright freezers feature trays that pull forward for easy access to your samples

Ordering information	Size (mm) W x D x H	Capacity	Catalog No.
Description			
Boxes			
2 in. (50 mm) tall	133 x 133 x 50	Varies, dependent on divider used	B50-SQ
3 in. (75 mm) tall	133 x 133 x 75	Varies, dependent on divider used	B75-SQ
4 in. (100 mm) tall	133 x 133 x 100	Varies, dependent on divider used	B95-SQ
5 mL Freezer box	128 x 128 x 67 mm	25 tubes	0030127943
Dividers			
7 x 7 compartments	17.4 mm max tube diameter	49 tubes	D49
8 x 8 compartments	15 mm max tube diameter	64 tubes	D64
9 x 9 compartments	13 mm max tube diameter	81 tubes	D81
10 x 10 compartments	11.8 mm max tube diameter	100 tubes	D100

Eppendorf Freezer Racks







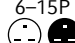
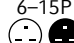
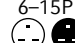
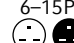
Style	Innova U101	Upright Innova	Upright Premium and HEF	Chest Freezers
Model	Under the counter Innova U101	Innova U360 Innova U535 Innova U725	Premium / HEF U410 Premium / HEF U570 Premium U700	Premium C340 Innova C585 Premium/HEF C660 Innova C760
2 in box	K0641-3003	K0641-3000	K0641-1900	K0641-1690
3 in box	K0641-3004	K0641-3001	K0641-1890	K0641-1700
4 in box	K0641-3005	K0641-3002	K0641-1880	K0641-1750
Rack Dimensions	12.13 x 5.55 x 11.52 in 308 x 141 x 292.5 mm	16.16 x 5.5 x 22.24 in 410.5 x 141 x 565 mm	9.25 x 5.5 x 22.24 in 235 x 141 x 565 mm	29.61 x 5.47 x 5.35 in 752 x 139 x 136 mm



Line

Innova Freezers



Style		Upright	Upright	Upright	Upright	Chest	Chest	
Model No.		U101	U360	U535	U725	C585	C760	
Capacity (ft ³)		3.6	12.7	18.9	25.6	20.7	26.9	
Catalog No.	120 V, 60 Hz	U9420-0000	U9425-0000	U9430-0000	—	U9400-0000	—	
	208–230 V, 60 Hz	—	—	U9430-0002	U9440-0002	U9400-0002	U9410-0002	
Plug provided (white); Outlet required (black) 120 V		5–15P 	5–20P 	5–20P 	—	5–20P 	—	
	208–230 V	—	—	6–15P 	6–15P 	6–15P 	6–15P 	
Capacity	Overall	101 L	360 L	535 L	725 L	585 L	760 L	
	Compartments	2	3	3	3	—	—	
	Racks per shelf	3	3	4	6	—	—	
	Racks per freezer	6	9	12	18	32	44	
	Box capacity per rack	2 in (50 mm) box (H)	10	28	28	28	13	13
		3 in (75 mm) box (H)	6	20	20	20	9	9
		4 in (100 mm) box (H)	4	12	12	12	6	6
	Box capacity per freezer	2 in (50 mm) box (H)	60	252	336	504	416	572
		3 in (75 mm) box (H)	36	180	240	360	288	396
		4 in (100 mm) box (H)	24	108	144	216	192	264
Sample capacity per freezer	2 in (50 mm) box (H)	6,000	25,200	33,600	50,400	41,600	57,200	
	3 in (75 mm) box (H)	3,600	18,000	24,000	36,000	28,800	39,600	
	4 in (100 mm) box (H)	2,400	10,800	14,400	21,600	19,200	26,400	
Performance	Pull down to –85 °C (Hours) ²	120 V, 60 Hz	3.5	5	5.3	—	4.3	—
		208–230V, 60 Hz	—	—	5.3	5.2	4.3	5.8
	Noise level (dB)	120 V, 60 Hz	54	54	56	—	56	—
		208–230V, 60 Hz	—	—	56	59	56	58
	Heat output (watts)	120 V, 60 Hz	344	623	720	—	700	—
		208–230V, 60 Hz	—	—	720	750	700	750
Power	Electric / Mains (A) / Full load amp draw	120 V, 60 Hz	13	16.5	16.5	—	16.5	—
		208–230 V, 60 Hz	—	—	9	10	9	10
	kWh per day ¹	120 V, 60 Hz	6.4	11.7	13.2	—	13.9	—
		208–230 V, 60 Hz	—	—	13.2	16.4	13.9	16.8
Refrigerant	60 Hz models	404A/508B	404A/508B	404A/508B	404A/508B	404A/508B	404A/508B	
Dimensions ³	External	Height (in)	32.7	76.8	76.8	76.8	43	43
		Width (in)	35.4	26.4	31.5	40.4	66.5	80.7
		Depth (in)	22.3	34.1	34.1	34.1	30.9	30.9
	Internal	Height (in)	25.2	53.7	53.7	53.7	30.7	30.7
		Width (in)	18.9	17.3	25.2	34.1	97.2	61.4
		Depth (in)	13	24.2	24.2	24.2	24.6	24.6
Compartment Heights	Top (in)	12.6	16.57	16.57	16.57	—	—	
	Middle (in)	—	16.73	16.73	16.73	—	—	
	Bottom (in)	12.4	16.73	16.73	16.73	—	—	
Weight	Net weight (lbs)	256	507	551	693	528	627	
	Shipping weight (lbs)	330	529	656	799	656	732	



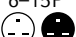
¹ Empty freezer with shelves fitted (upright freezers only), set point –80 °C, 22–26 °C ambient conditions.

² Empty freezer with shelves fitted (upright freezers only), pull down from 22–26 °C ambient conditions.

³ Optional CO2/LN2 back-up systems add 8.65 cm (3.4 in) to height.






High Efficiency Freezers



Upright	Upright	Chest
HEF U410	HEF U570	HEF C660
14.5	20.0	23.3
U9260-0007	U9270-0007	—
—	—	U9250-0009
5-20 P 	5-20 P 	6-15P 
410 L	570 L	660 L
5	5	—
3	5	—
15	25	40
16	16	13
12	12	9
8	8	6
240	400	520
180	300	360
120	200	240
24,000	40,000	52,000
18,000	30,000	36,000
12,000	20,000	24,000
5.8	6	—
—	—	6
57	58.5	—
—	—	61
525	630	—
—	—	580
16.5	16.5	—
—	—	8
8.6	12.2	—
—	—	11.5
404A/508B	404A/508B	404A/508B
75.3	75.8	42.3
31.5	40.3	80.7
33.5	33.5	33
49.8	49.8	30
21.6	30.1	57.8
22.6	22.6	23.2
9.84	9.84	—
9.45	9.45	—
9.45	9.45	—
518	584	616
623	689	722

Premium Freezers



Upright	Upright	Upright	Chest	Chest
U410	U570	U700	C340	C660
14.5	20.0	25.0	12.0	23.3
U9260-0000	U9270-0000	U9280-0000	U9230-0000	—
U9260-0002	U9270-0002	U9280-0002	—	U9250-0002
5-20P 	5-20P 	5-20P 	5-20P 	6-15P 
410 L	570 L	700 L	340 L	660 L
5	5	5	—	—
3	5	6	—	—
15	25	30	20	40
16	16	16	13	13
12	12	12	9	9
8	8	8	6	6
240	400	480	260	520
180	300	360	180	360
120	200	240	120	240
24,000	40,000	48,000	26,000	52,000
18,000	30,000	36,000	18,000	36,000
12,000	20,000	24,000	12,000	24,000
4.1	5.3	5.9	3.4	—
4.1	5.3	4.8	—	6
57	58.5	61	58	—
57	58.5	61	—	58
600	700	755	580	—
600	700	755	—	650
16.5	16.5	13	16.5	—
8	9	8	—	8
13	14.2	15.9	10.3	—
13	14.2	15.9	—	15
404A/508B	404A/508B	404A/508B	404A/508B	404A/508B
75.3	75.8	77.1	42.3	42.3
31.5	40.3	44.1	52.7	80.7
33.5	33.5	34.3	33	33
49.8	49.8	51.8	30	30
21.6	30.1	34.1	30	57.8
22.6	22.6	24.1	23.2	23.2
9.84	9.84	9.8	—	—
9.45	9.45	10.43	—	—
9.45	9.45	10.37	—	—
518	584	615	441	616
623	689	820	546	722

Backed by world-class service

Service and support for your peace-of-mind



Connect With Us

