



# LABOMED, INC.



## LB-232 Binocular Biological Microscope with Phase Contrast Kit

### Introduction

With precision machining equipment and advanced alignment technology, LB-232 Binocular microscopes are precise biological microscopes.

### Applications

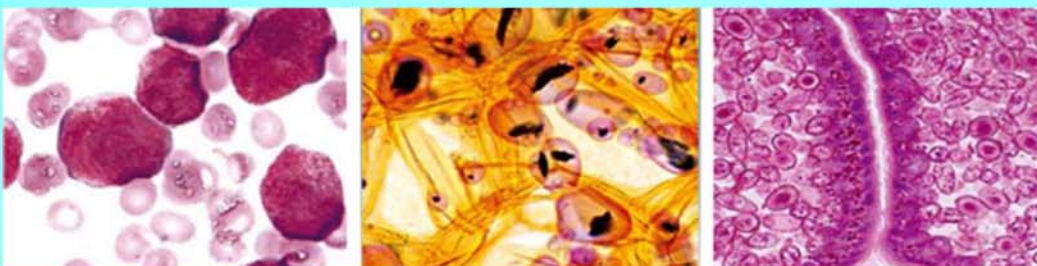
This binocular microscope is an ideal instrument in the biological, histological, and pathological fields and can be widely used in medical and sanitary establishments, laboratories, institutes, academic laboratories, colleges and universities.

### Technical Specifications

Viewing Head:	Binocular Head, Head Binocular sliding inclined at 45 ° and 360 ° turn 55-75mm interpupillary distance. Anti-mould.
Eyepiece:	Wide Field Eyepiece WF10×/ 18
Nosepiece:	Quadruple Nosepiece
Objective:	Achromatic Objective 4×, 10×, 40×, 100× (Can be supplied with plan achromatic objectives)
Total magnification:	With 10x eyepiece: 40×, 100×, 400×, 1000×
Stage:	Double Layer Mechanical Stage 140×140mm/ 75×50mm
Focus:	Coaxial Coarse & Fine Adjustment, Moving Range 28mm, Fine Division 0.002mm. Coarse Stroke 37.7 mm per rotation.
Condenser:	Abbe NA 1.25 with Iris Diaphragm & Filter
Illumination:	Built-in Illumination, 6V 20W Halogen light, intensity adjustable Plan-concave Mirror, Kohler illumination (optional)
Body / Energy:	Body firm backing of Aluminum and built in power supply 110-240V
Supplied With:	Dust cover, green filter, immersion oil and operating manual
Dimension & G.W.:	33cm×28cm×44cm×, 9 kg



### Sample Images



Connect With Us

