



LB-244 Binocular LED Fluorescent Biological Microscope with Wide Field, Epi-Fluorescent Attachment, Seidentopf Binocular Head, Infinite Semi-Plan Achromatic Objectives and Optical System (Infinity Color Corrected System)

Introduction

LB-244 Binocular LED Fluorescent Biological Microscope with Wide Field, Epi-Fluorescent Attachment, Seidentopf Binocular Head, Infinite Semi-Plan Achromatic Objectives and Optical System are newly developed microscopes, the microscopes use LED as the light source, the life span of the LED lamp is much longer than mercury lamp, the performance is also better.

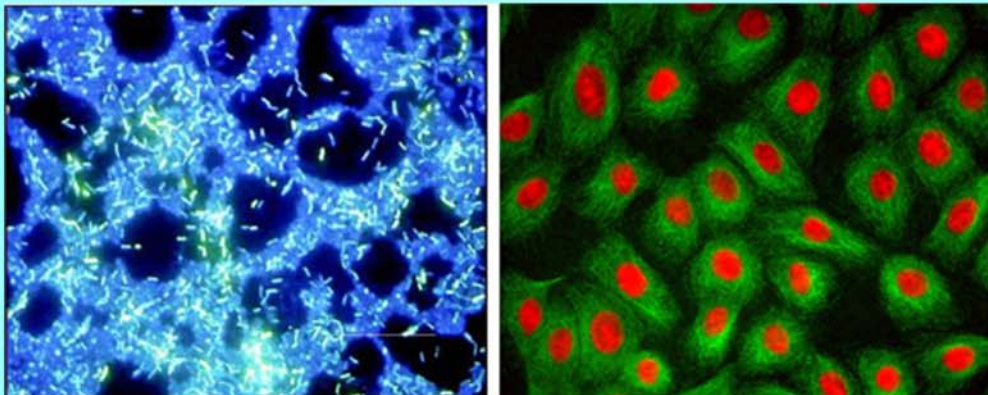
Applications

LB-244 Binocular LED Fluorescent Biological Microscopes are used to study the absorbing, transportation, chemicals distribution and positioning in cells. They are widely used in disease examination, immune diagnosis and life science areas.

Technical Specifications

Optical System:	Infinite Optical System			
Viewing Head:	Seidentopf Binocular Viewing Head, Inclined at 30°, 360° Rotatable, Interpupillary 48-75mm			
Eyepiece:	Wide Field Eyepiece WF10×/20			
Nosepiece:	Backward Quadruple Nosepiece			
Objective:	Infinite Semi-Plan Achromatic Objective 4×(N.A.0.10, W.D15.5mm), 10×(N.A.0.25, W.D5.02mm), 40×(N.A.0.65, W.D0.60mm), 100×(N.A1.25, W.D0.13mm)			
Condenser:	Sliding-in Centerable Condenser NA 1.25			
Focusing:	Coaxial Coarse & Fine Adjustment, Fine Division 0.002mm, Coarse Stroke 37.7mm per Rotation			
Stage:	Rectangular 216×150mm, Cross Travel 78×54mm, Using Low-positioned X/ Y Coaxial Control Knob, Can Hold Two Sides			
Illumination:	LED Illumination, Halogen Lamp 6V/20W (optional)			
Reflected Light Source:	Excitation	Dichroic Mirror	Barrier Filter	
	Blue excitation	BP460~490	DM505	BA515
	Green excitation	BP510~550	DM570	BA590
Lamp:	3W LED Lamp (465-476nm)			
Immersion Oil:	Fluorescent Free Oil			
Dimensions:	38cm*26cm*51cm, 9kg			

Sample Images



Connect With Us

