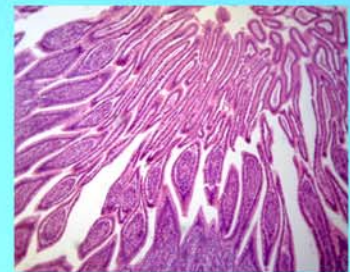




# LABOMED, INC.



## LB-240 Binocular Biological Microscope with Plan Objectives (Anti-Fungus)

- Built-in transmitted illumination System LED
- Frame should have end opening, Stage Focusing Lock
- Stage height movement coarse and fine Focusing on both sides of frame
- Quadruple nosepiece
- Abbe type with aperture iris diaphragm NA:1.25
- Plan Achromatic objectives (anti-fungus)
- Extra Wide Field Eyepiece EW10x/18 with Diopter Adjustment as Optional
- Comfortable Observation with Eyepoint and Interpupillary Adjustable
- Abbe NA 1.25 Condenser with Iris Diaphragm & Filter
- Handle for easy carrying
- Advanced design of mechanical stage structure prevents the scratches of users.



# LABOMED, INC.

## LB-240 Binocular Biological Microscope with Plan Objectives (Anti-Fungus)

### Introduction

LB-240 Binocular Biological Microscope with Plan Objectives (Anti-Fungus) With precision machining equipment and advanced alignment technology, LB-240 binocular biological microscope is an excellent biological microscope.

### Applications

This binocular microscope is an ideal instrument for the biological, histological, and pathological fields, and can be widely used in medical and sanitary establishments, laboratories, institutes, academic laboratories, colleges and universities.

### Specifications

Viewing Head:	Sliding Binocular head, Inclined at 45°, 360° Rotatable, 55-75mm Interpupillary Distance. Anti-Fungus.
Eyepiece:	Wide Field Eyepiece WF 10×/18
Nosepiece:	Quadruple Nosepiece
Objective:	Plan Achromatic Objectives 4x, 10x, 40x, 100x
Total Magnification:	With 10x eyepiece: 40x, 100x, 400x, 1000x
Stage:	Double Layers Mechanical Stage 140mm×140mm/ 75mm×50mm
Focus:	Coaxial Coarse & Fine Adjustment, Moving Range 28mm, Fine Division 0.002mm
Condenser:	Abbe NA 1.25 with Iris Diaphragm & Filter
Illumination:	LED Illumination 3W (or) Halogen Lamp 6V/20W (optional), Brightness Adjustable
Body/Power:	Body with firm backing of aluminum and a built-in power supply 110-230V
Supplied With:	Dust cover, green filter, immersion oil, plan concave mirror
Dimensions & G.W.:	33cm x 28cm x 44cm, 9 kg

Connect With Us

