



## E-Z Probe®

### General Purpose Pocket Pyrometer

The E-Z Probe® Pyrometer delivers reliable accuracy and rugged durability for an economical price. Rugged enough to withstand the daily use in laboratory and industrial applications, the E-Z Probe® is one of the most dependable and economical temperature measuring devices on the market today.

As with all EDL products, this instrument is traceable to the National Institute of Standards Technology (NIST). This instrument is also backed by an unconditional one year guarantee.

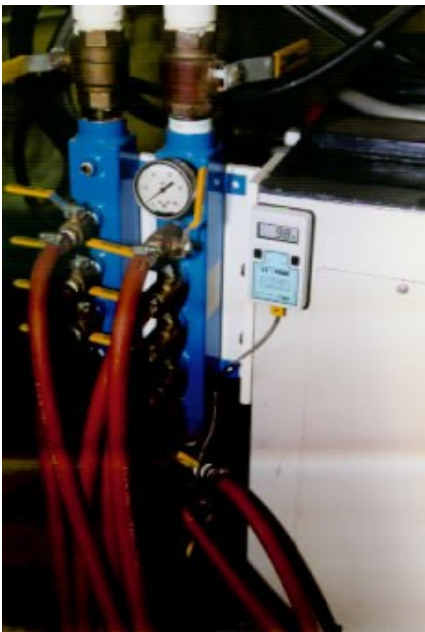
### E-Z Probe® Pyrometer Features:

**High Impact Plastic Alloy Case:** Rugged and durable with internal ribbing for added strength.

**Magnetic Backing:** Allows operator to mount instrument to any iron or steel surface such as machines, tanks, etc.

**Multiple Input Jacks:** Different models of the E-Z Probe® are available that feature one or two input jack locations for convenience in specific temperature measurement applications.

E-Z Probe® Pyrometers simple and easy to use. They have only an ON/OFF switch and an optional °F/°C switch.



This E-Z Probe® is mounted using the magnetic backing.

### Specifications:

Accuracy: +/- 1°F/°C  
 Resolution: 1°  
 Repeatability: +/- 1°  
 Thermocouple Type: Type J or K  
 Response Time: 0.3 seconds (3 per second)  
 Linearization: Continuous and automatic  
 Ambient Compensation: Automatic  
 Tested Ambient: +40° to +120°F (4° to 49°C)  
 Useable Ambient: -20° to +175°F (-29° to 79°C)  
 Storage Temperature: -20° to +175°F (-29° to 79°C) (w/o battery)  
 Display: 1/2" tall LCD  
 Input: 1/2" tall LCD  
 Input Impedance: Two miniature jacks  
 Battery: 500 ohm maximum  
 Battery Life: Standard 9 volt alkaline  
 Low Battery Indicator: Up to 3000 hours  
 Case: Displays "LO BAT"  
 Weight: Molded high impact plastic  
 Dimensions: 6.2 oz. with battery  
 4.8" x 2.7" x 1.0"



Complete application specific kits are available which include instrument, sensors, and carrying case.

MODEL	Temperature Range	ACCURACY
EZK	0° to +600°F	±1°F
EZK-C	-20° to +925°C (0° to +1700°F)	-20° to +425°C ±1°C +450° to +925°C ±1/2% of reading 0° to +800°F ±1°F +850° to +1700°F ±1/2% of reading
EZJ-C	-100° to +595°C (-280° to +1100°F)	±1°C
X	Lexan® display window ( add "X" after MODEL number)	
CC-EZ	Carrying case- black Cordura; holds instrument and up to two sensors	



Connect With Us

