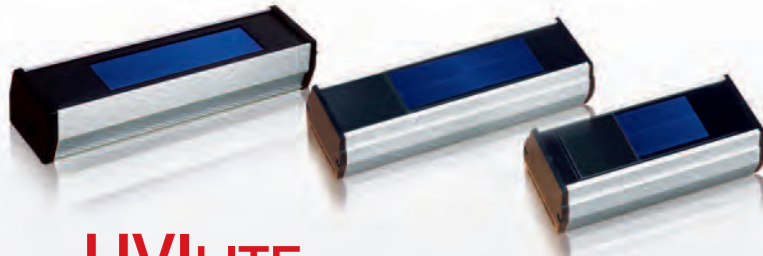


Connect With Us



## UVILITE

### Ultraviolet filtered lamps for fluorescence applications

Our filtered lamps are used in fluorescent techniques. They incorporate an extruded, anodised aluminium housing. The operator-friendly shape permits lamps to be held with gloved hands easily.

Our highly efficient, well-designed lamps are produced in three wavelengths: 254, 302 and 365nm as well as in dual wavelength combinations. Power ranges from a single 4W tube up to two 15W tubes.

#### > Applications include:

- Short wavelength (254nm): fluorescence techniques, fluoro-chemistry, mineralogy, photo-polymerisation, mutation studies, toxicology.
- Mid wavelength (302nm): electrophoresis gel viewing.
- Long wavelength (365nm): TLC plate viewing, fluoro-chemistry, food inspection, quality control, titration, pesticide analysis, mineralogy.

#### Ordering

Model No.	Filter (mn)	Tube (mn)	Wavelength (mn)	Intensity at 15cm $\mu\text{W}/\text{cm}^2$	External size
LF-104L	50 x 75	1 x 4W	365	400	205x82x65
LF-104S	50 x 75	1 x 4W	254	340	205x82x65
LF-106L	50 x 150	1 x 6W	365	700	282x82x65
LF-106M	50 x 150	1 x 6W	312	680	282x82x65
LF-106S	50 x 150	1 x 6W	254	710	282x82x65
LF-115L	80 x 300	1 x 15W	365	1100	505x140x100
LF-115M	80 x 300	1 x 15W	312	1000	505x140x100
LF-115S	80 x 300	1 x 15W	254	1000	505x140x100
LF-204LS	50 x 75	1 x 4W 1 x 4W	365 254	350 265	205x82x65
LF-206LM	50 x 150	1 x 6W 1 x 6W	365 312	610 580	282x82x65
LF-206LS	50 x 150	1 x 6W 1 x 6W	312 254	610 400	282x82x65
LF-206MS	50 x 150	1 x 6W 1 x 6W	365 254	580 400	282x82x65
LF-215L	80 x 300	2 x 15W	365	2300	505x140x100
LF-215M	80 x 300	2 x 15W	312	3000	505x140x100
LF-215S	80 x 300	2 x 15W	254	1780	505x140x100
LF-215LM	80 x 300	1 x 15W 1 x 15W	365 312	1350 1800	505x140x100
LF-215MS	80 x 300	1 x 15W 1 x 15W	312 254	1800 930	505x140x100
LF-215LS	80 x 300	1 x 15W 1 x 15W	365 254	1350 930	505x140x100

## UVICAB

### Ultraviolet viewing cabinet

#### CV-415 cabinet

Professional unit for effective viewing with power intensity unrivalled in this field.

- Incorporates 4 x 15Watt UV tubes plus one 40Watt white light bulb
- Any single or dual wavelength combination of 254, 302 and 365nm wavelengths
- Versatile: simply change the tubes when a new wavelength is required
- Removable base panel enabling positioning above a standard transilluminator
- Viewing port with UV absorbing filter

#### > Applications of CV cabinets

- Reading chromatograms (paper or TLC)
- Fluorescent analysis in biology, chemistry and forensics
- Industrial and electronic quality control
- Can also be used for applications in geology and mineralogy



#### CV-006 cabinet

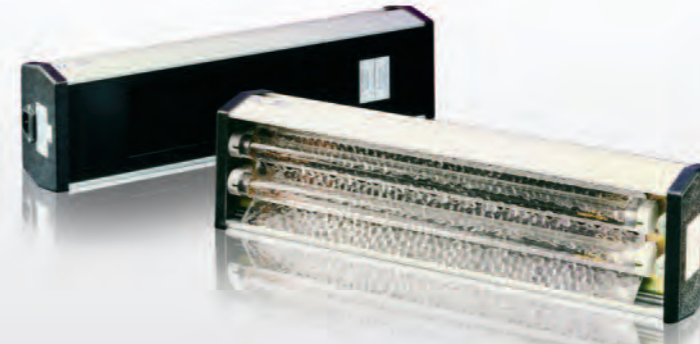
An economic solution to laboratory inspection of fluorescent samples.

- Compact, versatile and efficient
- Can hold one or two UVILITE, 6W UV lamps
- Choose from 254, 302 or 365nm wavelengths
- Viewing port with UV absorbing filter

#### Ordering

Model No.	Description (mn)	Tube & wavelength (mn)	Intensity at bottom $\mu\text{W}/\text{cm}^2$	External size (WxDxH) Internal size (WxD)
CV-415LL	cabinet, long wave	4 x 15W – 365nm	2000	505x415x280 450x300
CV-415SS	cabinet, short wave	4 x 15W – 254nm	1750	505x415x280 450x300
CV-415MM	cabinet, mid wave	4 x 15W – 302nm	1800	505x415x280 450x300
CV-415 LM	cabinet, long/mid	2 x 15W – 365nm 2 x 15W – 302nm	1050 970	505x415x280 450x300
CV-415MS	cabinet, mid/short	2 x 15W – 302nm 2 x 15W – 254nm	970 900	505x415x280 450x300
CV-415LS	cabinet, long/short	2 x 15W – 365nm 2 x 15W – 254nm	1050 900	505x415x280 450x300
CV-015W	cabinet, white light	40W bulb white light		505x415x280 450x300
CV-006	mini cabinet,	1 or 2 LF-106 or LF-206 lamps (not supplied)		300x280x240 260x240

All versions of CV 415 fitted with 1 x 40Watt white light bulb



## UVILITE

### Germicidal lamps

Widely used in medical and scientific research laboratories as well as in electronics and the food and beverage industries. Areas that must be kept free from bacterial contamination may be irradiated with UVITEC germicidal lamps as long as safeguards are in place to protect operators.

#### Ordering

Model No.	Tube	Intensity $\mu\text{W}/\text{cm}^2$	External size
LI-206G	2 x 6W	1400*	282x82x65
LI-208G	2 x 8W	1800*	359x82x65
LI-215G	2 x 15W	76	505x140x100
LI-220G	2 x 20W	95	678x140x108
LI-230G	2 x 30W	152	983x140x108
LI-240G	2 x 40W	157	1288x140x108
LI-315G	3 x 15W	95	505x140x100
LI-320G	3 x 20W	119	678x140x108
LI-330G	3 x 30W	191	983x140x108
LI-340G	3 x 40W	219	1288x140x108

Intensities all at 1m except \* at 15cm

#### BL/BLB unfiltered UV long wave lamps

BL (Black-light) tubes are actinic ultraviolet types and include a white light component in the output.

Applications for BL lamps include polymer curing, adhesive curing, dermatology, pharmacology, photo-resist exposure.

BLB (Black-light Blue) tubes are self-filtered cobalt glass – to reduce the visible light component and increase fluorescent contrast.

Applications for BLB lamps include: non-destructive testing, quality control, invisible coding/marketing, counterfeit note detection, rodent contamination detection, readmission control, aflatoxin detection, signature verification.

#### Ordering

Model No.	Tube	Intensity $\mu\text{W}/\text{cm}^2$	External size
LI-206BL	2 x 6W BL	1215*	282x82x65
LI-208BL	2 x 8W BL	1400*	359x82x65
LI-215BL	2 x 15W BL	108	505x140x100
LI-315BL	3 x 15W BL	147	505x140x100
LI-220BL	2 x 20W BL	129	678x140x108
LI-320BL	3 x 20W BL	177	678x140x108
LI-230BL	2 x 30W BL	228	963x140x108
LI-330BL	3 x 30W BL	312	963x140x108
LI-240BL	2 x 40W BL	302	1288x140x108
LI-340BL	3 x 40W BL	413	1288x140x108

Model No.	Tube	Intensity $\mu\text{W}/\text{cm}^2$	External size
LI-206BLB	2 x 6W BLB	1120*	282x82x65
LI-208BLB	2 x 8W BLB	1300*	359x82x65
LI-215BLB	2 x 15W BLB	100	505x140x100
LI-315BLB	3 x 15W BLB	136	505x140x100
LI-220BLB	2 x 20W BLB	119	678x140x108
LI-320BLB	3 x 20W BLB	163	678x140x108
LI-230BLB	2 x 30W BLB	210	983x140x108
LI-330BLB	3 x 30W BLB	288	983x140x108
LI-240BLB	2 x 40W BLB	279	1288x140x108
LI-340BLB	3 x 40W BLB	381	1288x140x108

## UVIACCESSORIES

### Lamp accessories

Lamp stands are useful for easy positioning of lamps above a surface.



Model No.	Type	Compatibility
LS-08	Stand	For LI or LF lamps, 4, 6 or 8 W
LS-15	Stand	For LI or LF lamps, 15 W

Note: 20, 30 and 40 W lamps are supplied with built-in wall-bracket.